

Xerox Copier Install Tutorial

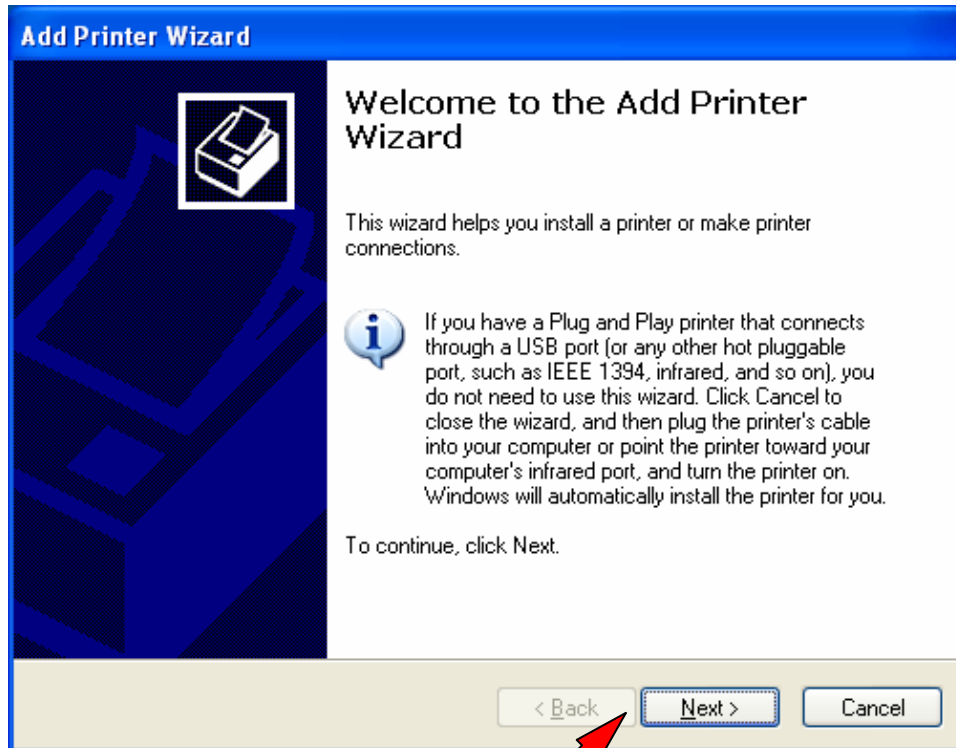
Windows 2000 Operating systems:

1. Start
2. Settings
3. Choose Printers
4. Dbl Click *Add Printer*
5. Follow tutorial below for the rest of the install.

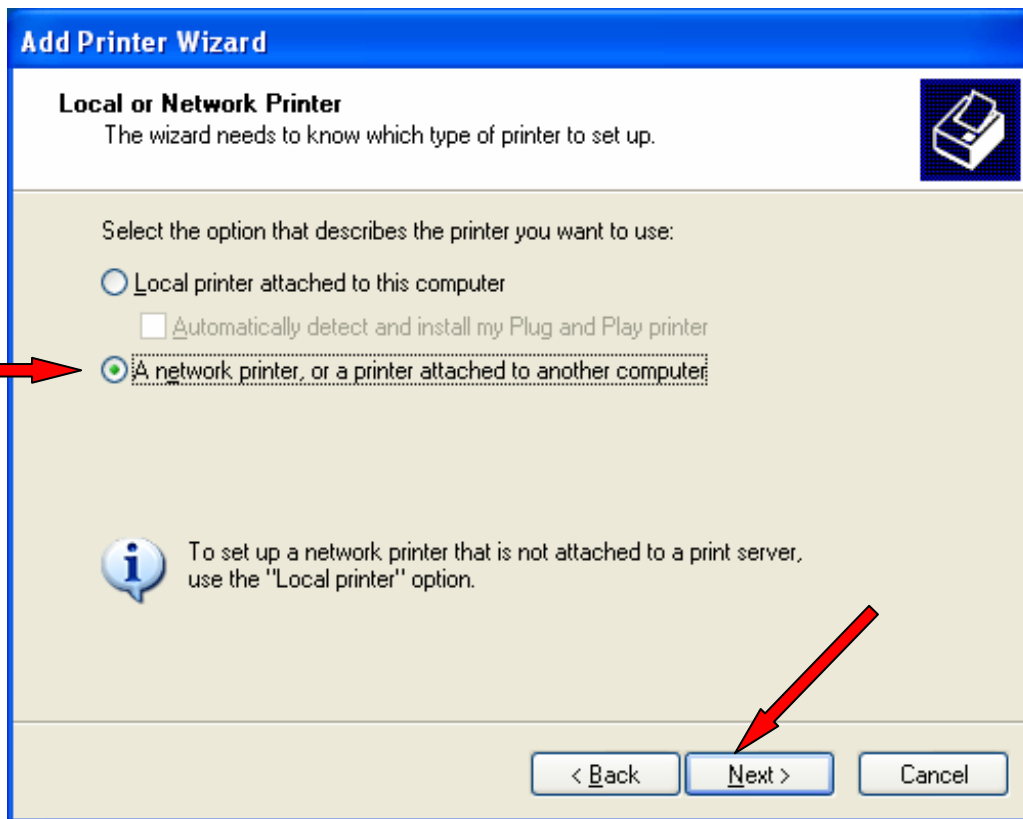
Windows XP Operating systems:

1. Start
2. Printers and Faxes
3. Under **Printer Tasks** on the left, click *Add a Printer*
4. Follow tutorial below for the rest of the install.

A. Click Next



B. Choose a network printer, then click next.



C. Click Find a printer in the directory.

Add Printer Wizard

Specify a Printer
If you don't know the name or address of the printer, you can search for a printer that meets your needs.

What printer do you want to connect to?

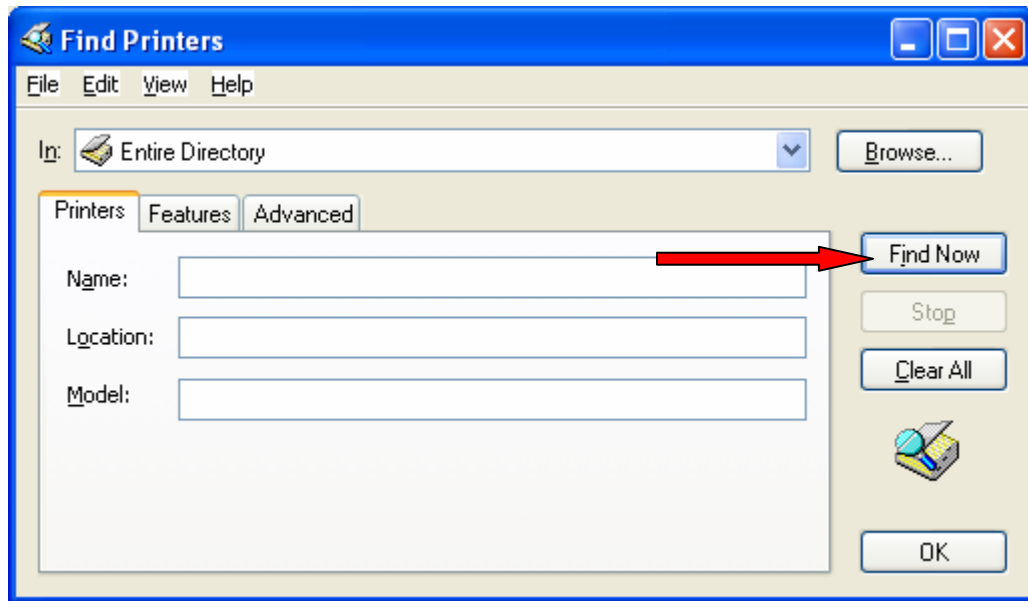
Find a printer in the directory.

Connect to this printer (or to browse for a printer, select this option and click Next):
Name:
Example: \\server\printer

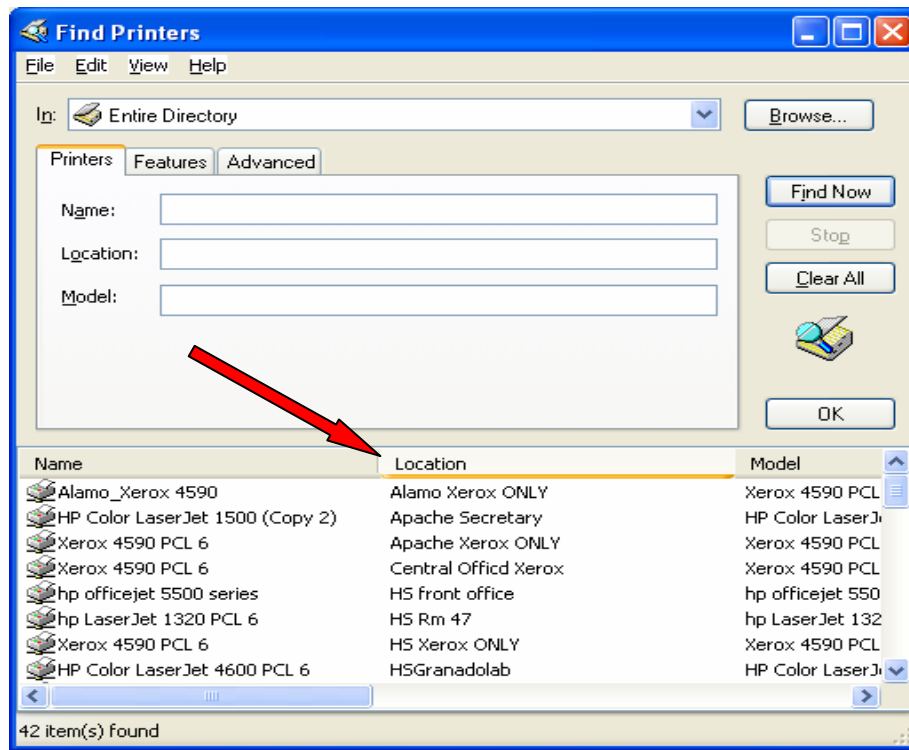
Connect to a printer on the Internet or on a home or office network:
URL:
Example: http://server/printers/myprinter/.printer

< Back Next > Cancel

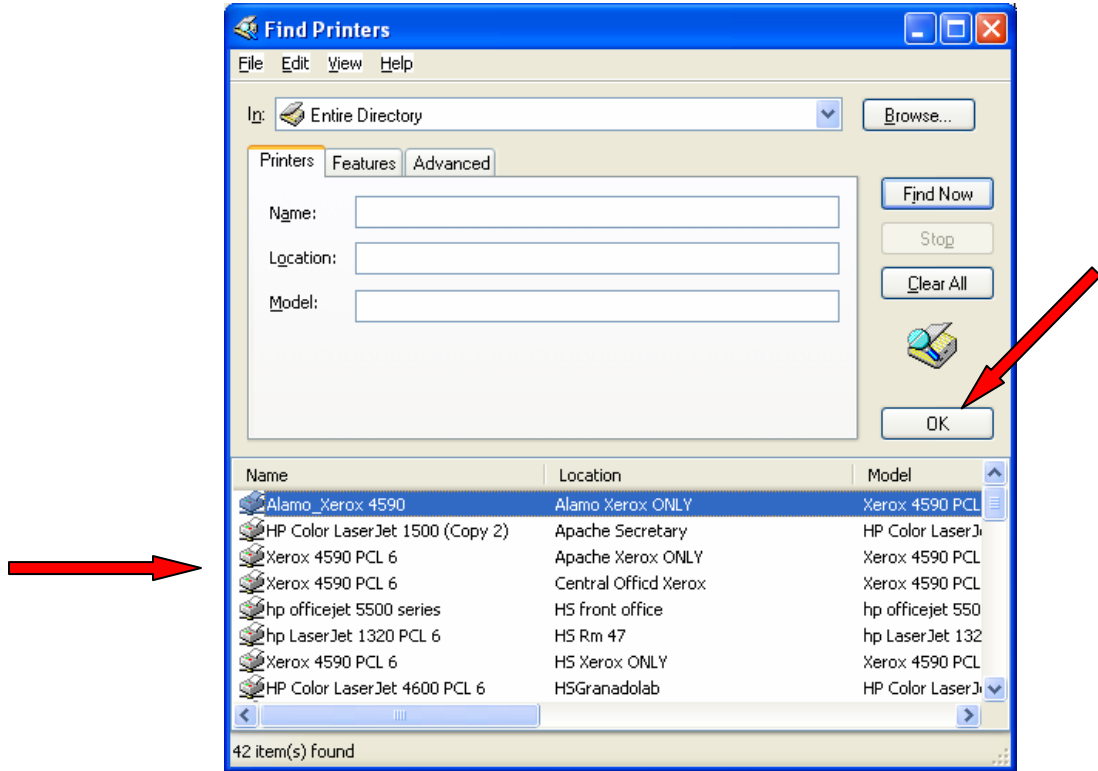
D. Click *Find Now*, you will see all the network printers appear in the printer box below.



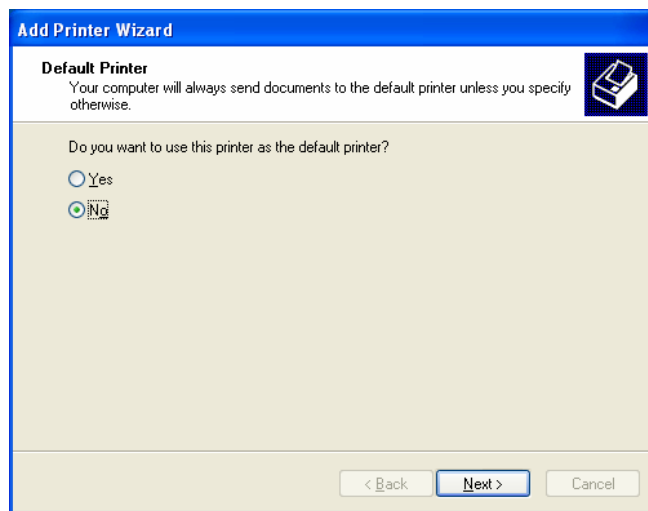
E. Click the word "Location" and this will sort the printers in alphabetical order by location.



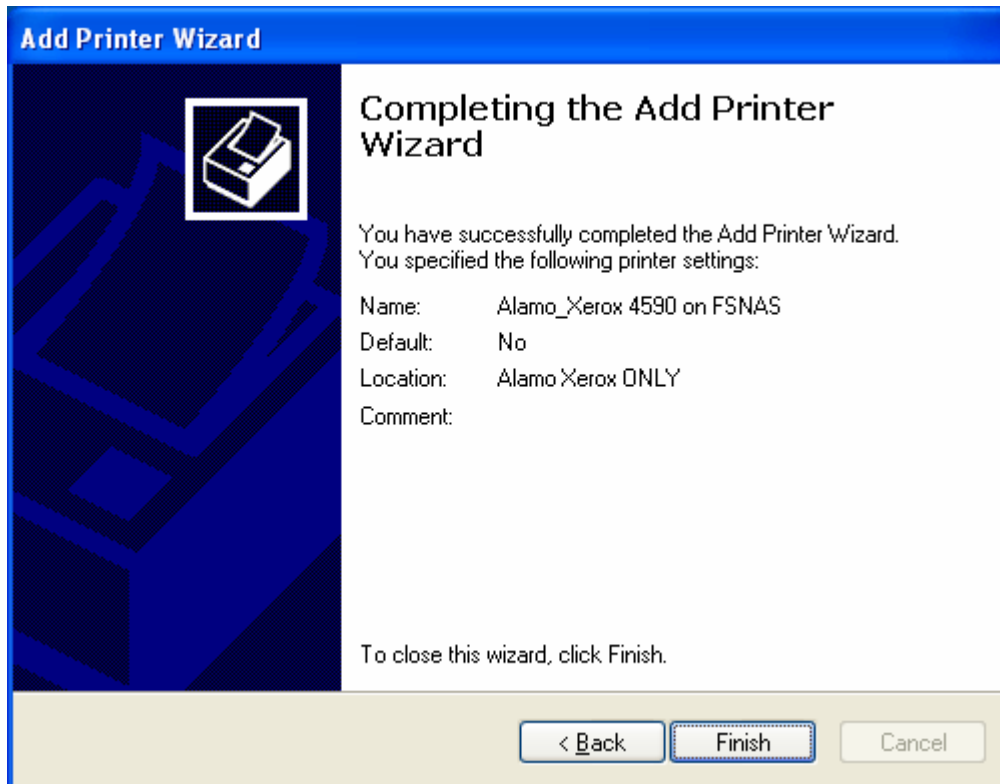
- E. Choose your campus Xerox ONLY
Scroll down through the list and choose your
Campus Name_Xerox 4590 Campus Xerox ONLY
Then click ok



- E. Choose Yes or No depending if you want this printer as your default printer.

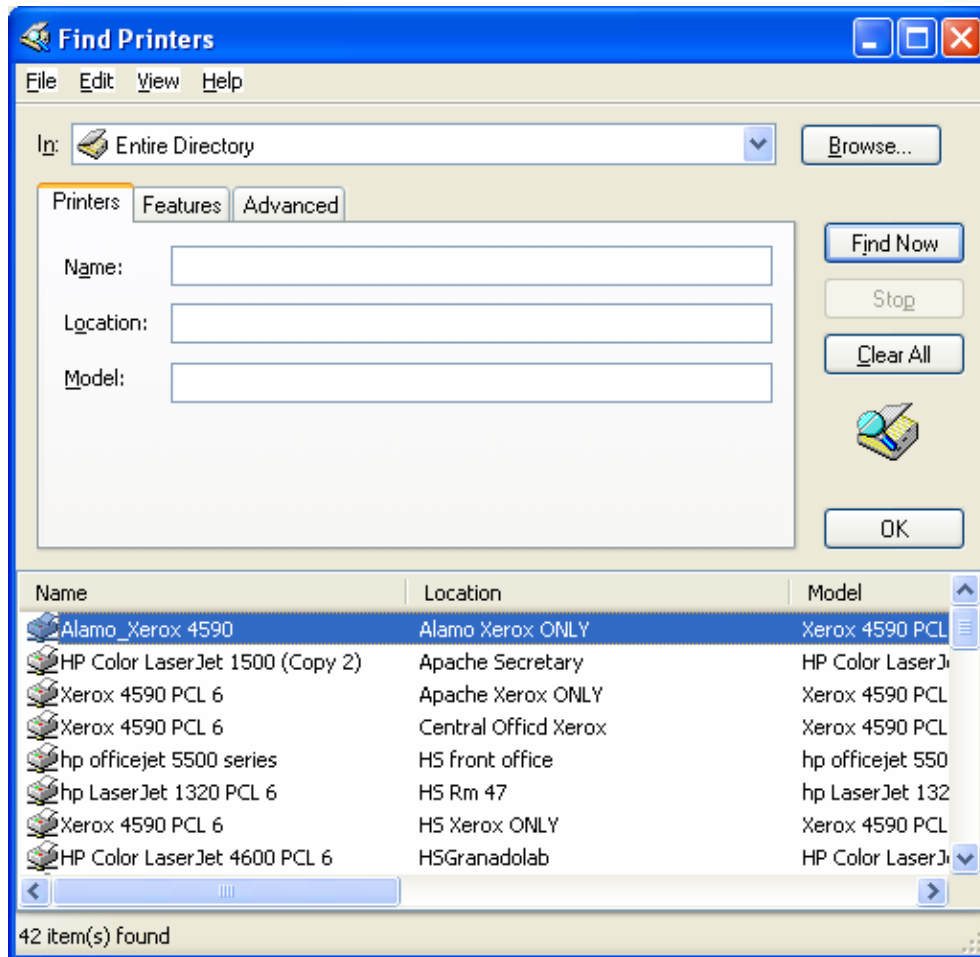


Click Finish to complete your install of the Xerox Printer on your campus.

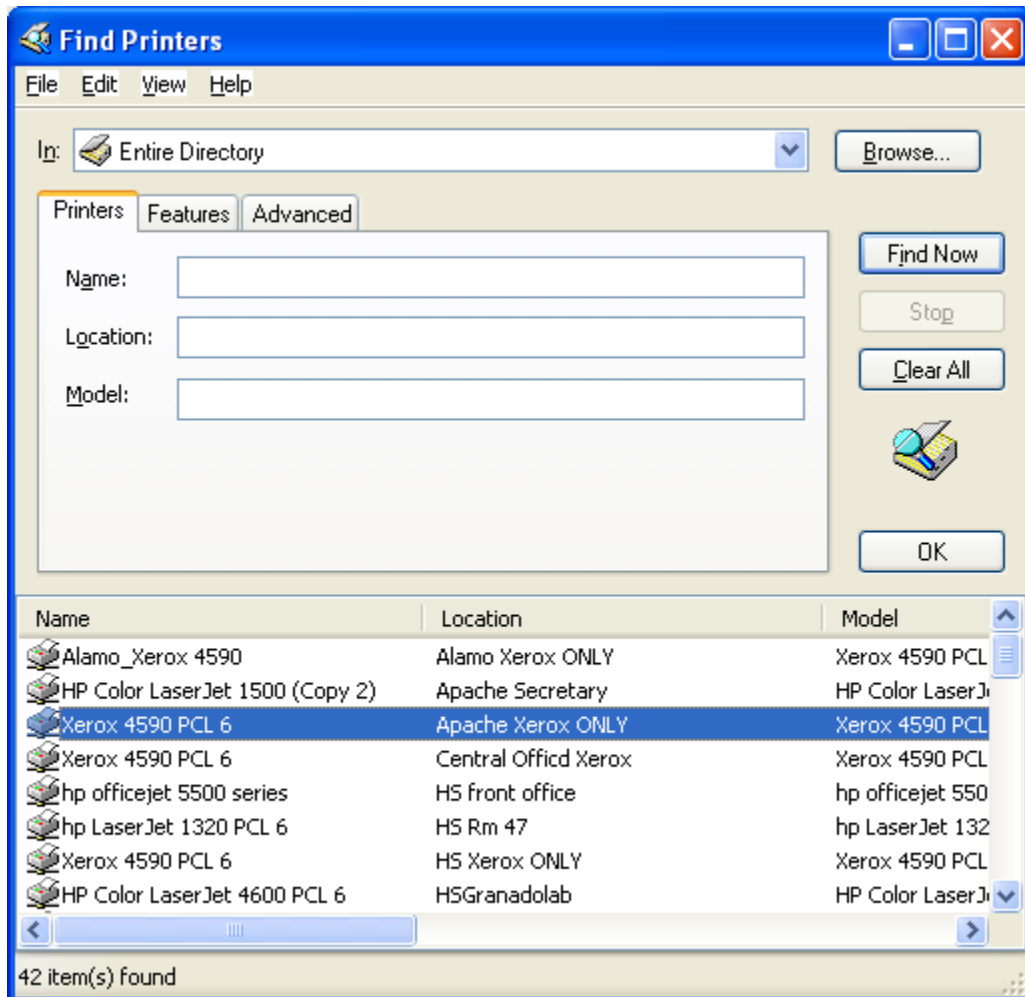


The following configurations are specific to each campus. Find your campus configuration and install the correct Xerox printer.

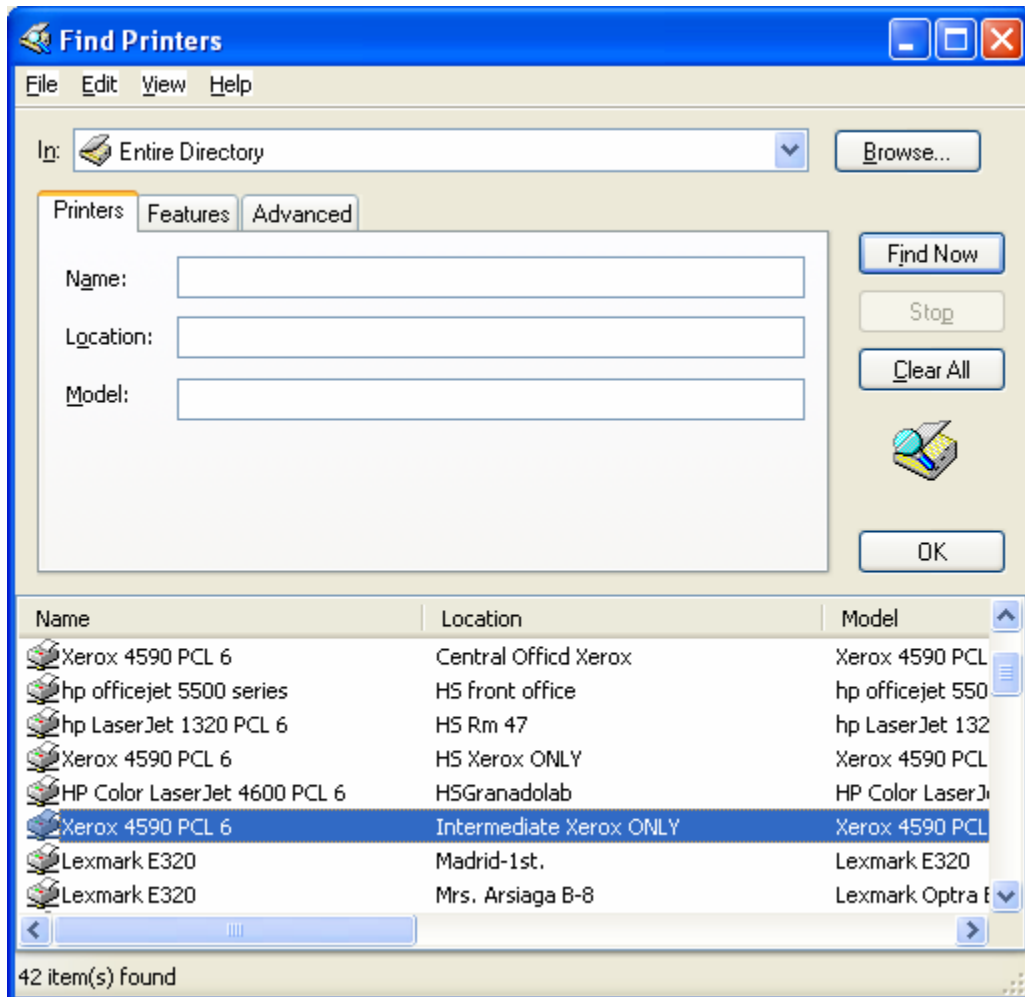
F. Alamo Configuration



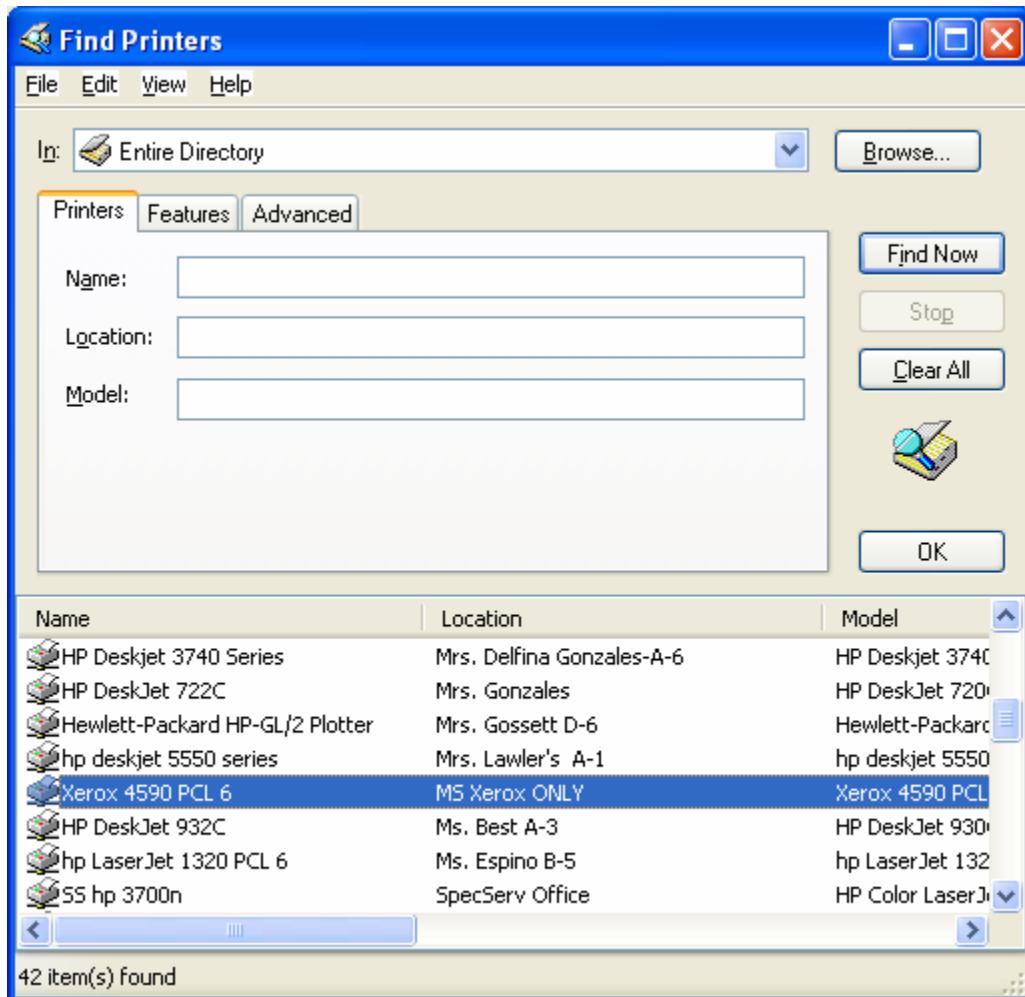
G. Apache configuration



H. Intermediate Configuration



I. Middle School Configuration.



H. High School Configuration

