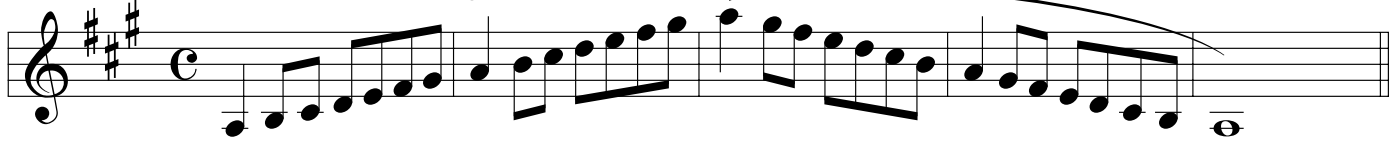


ATSSB B^b Bass & Contra Clarinet

Scales

All scales are to be played at a minimum of ♩ = 120

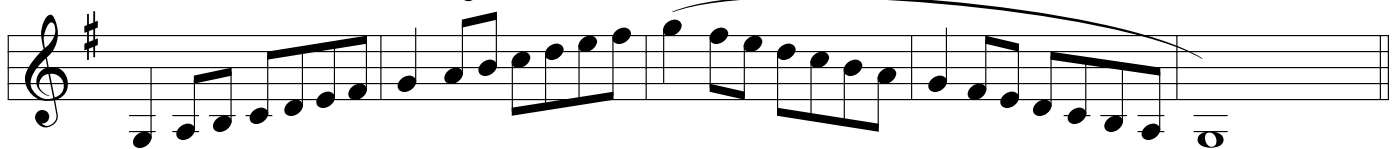
1. Concert G (written A) Major Scale



2. Concert C (written D) Major Scale



3. Concert F (written G) Major Scale



4. Concert B^b (written C) Major Scale



5. Concert E^b (written F) Major Scale



6. Concert A^b (written B^b) Major Scale



7. Concert D^b (written E^b) Major Scale



8. Chromatic Scale

